

N.W. 1/4
SECTION 27, T.7N., R.2W., S.L.B. & M.

IN PLAIN CITY AND WEBER COUNTY

SCALE 1" = 200'

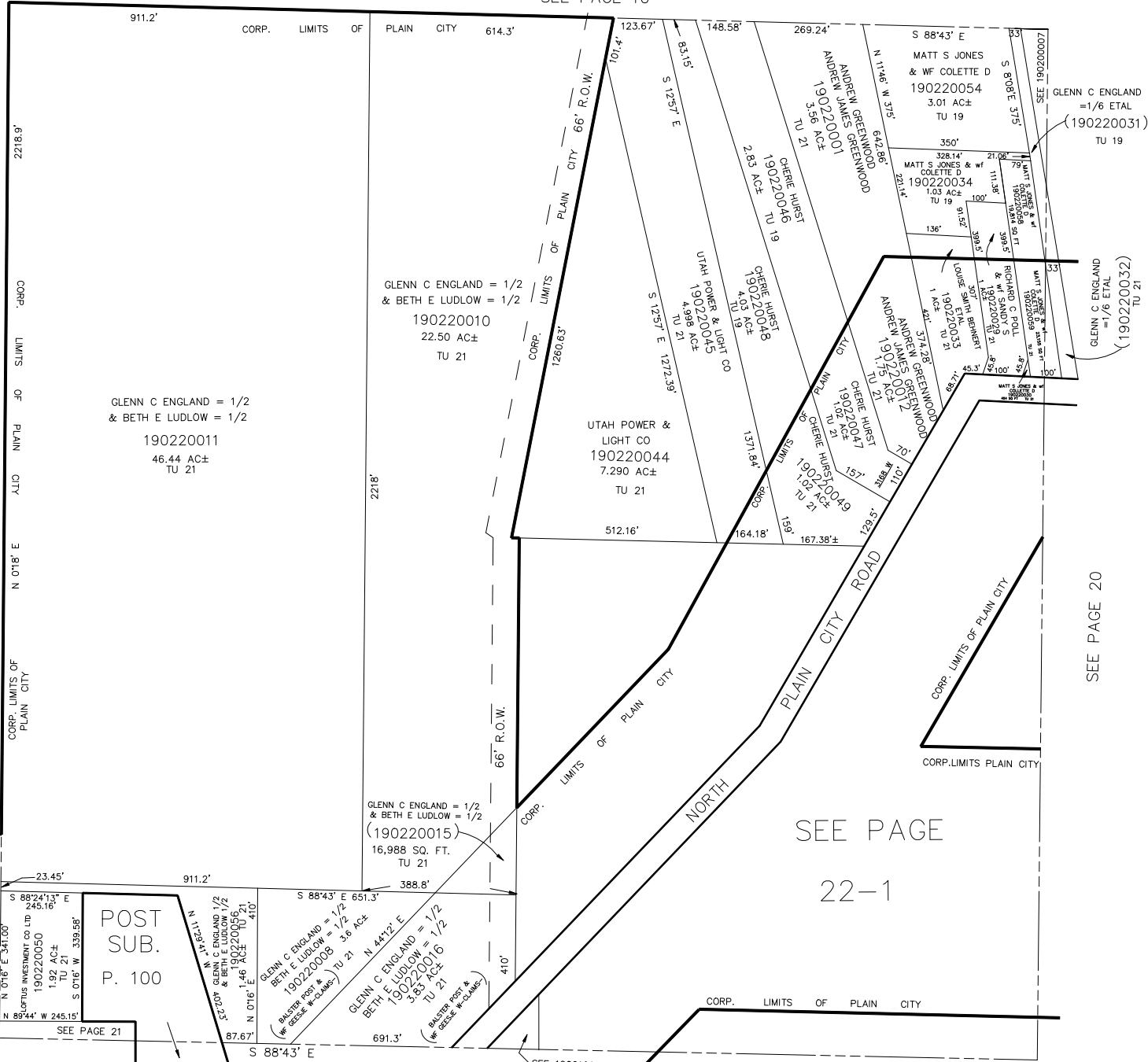
TAXING UNIT: 19, 21

SEE PAGE 10

SEE PAGE 28

SEE PAGE 20

SEE PAGE
22-1



SEE PAGE 21

SEE PAGE 21

SEE 190210003